

Technical specification - comparison

Transducer current to voltage

Part number – Adiro:

Part number – Festo Didactic:

Measure range:

Output signal:

Supply voltage:

Usage in Compact Workstation
and EduKit-PA Advanced

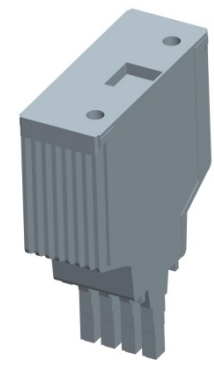
OLD

BE.EL.0545

-

4-20 mA to 0-10 V

24V DC



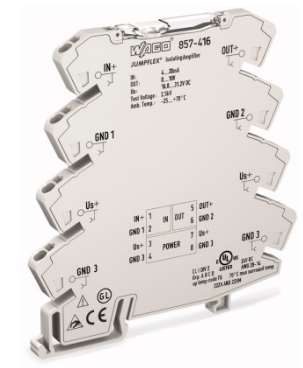
NEW

BE.EL.1173

-

4-20 mA to 0-10 V

24 V DC

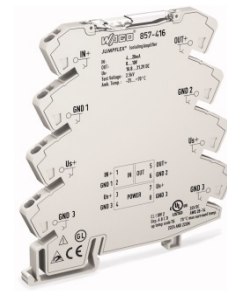


Phase-out and spare part process – possibilities



Discontinued!

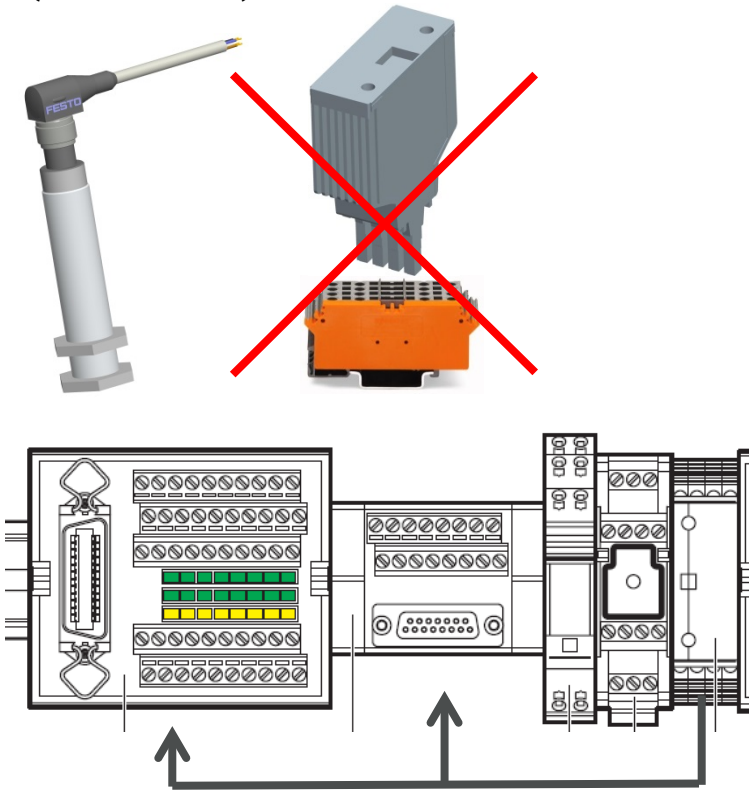
Customer uses:
Spare part available



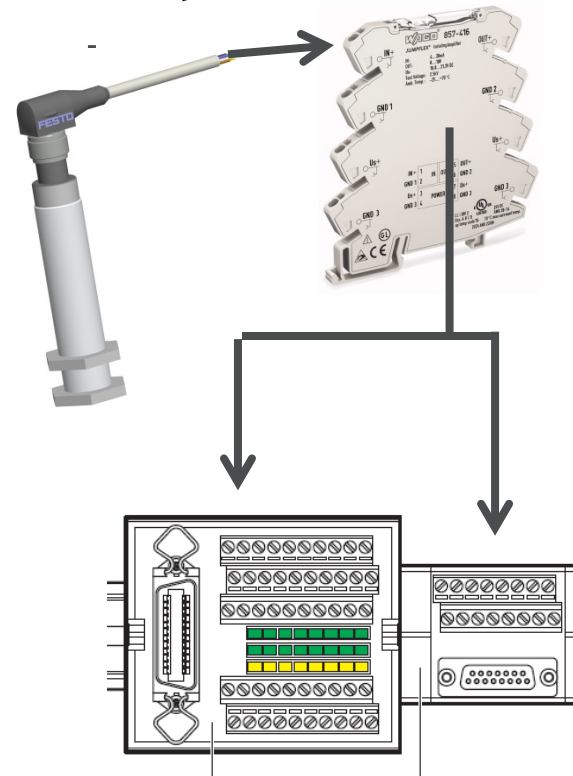
Transducer C-V as spare part:
Adiro part number BE.EL.1172

Wiring – replace transducer C-V only

Ultrasonic sensor with old transducer f-V
(BE.EL.0545)

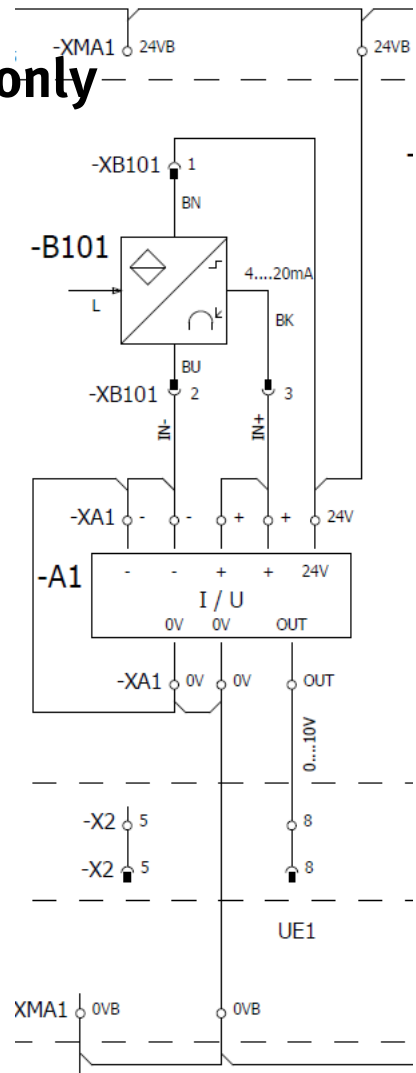
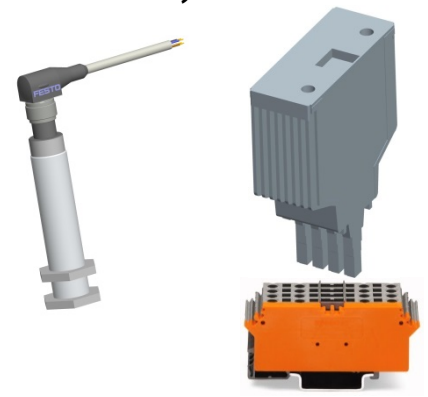


Ultrasonic sensor with new transducer f-V
BE.EL.1172

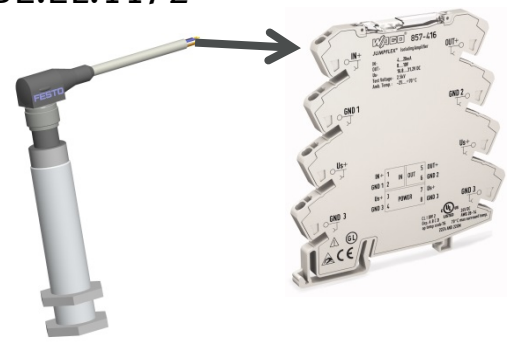


Wiring – replace transducer C-V only

Ultrasonic sensor with old transducer f-V (BE.EL.0545)



Ultrasonic sensor with new transducer f-V BE.EL.1172



Steps:

1. Remove old transducer and socket
2. Install new transducer
3. Rewire new transducer to SysLink and Analogue terminal
4. Rewire sensor to new transducer

The transducer is with fixed convertor, no DIP-switches!

